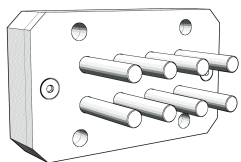


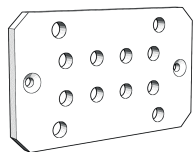
DoT

BY ERPICUM

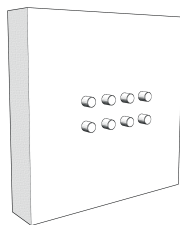
Instructions de montage



Mécanisme

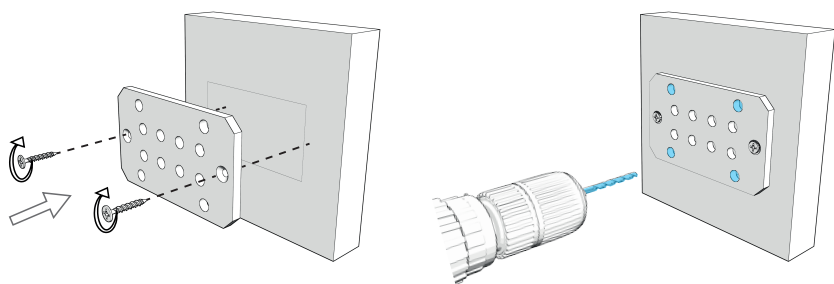


Gabarit

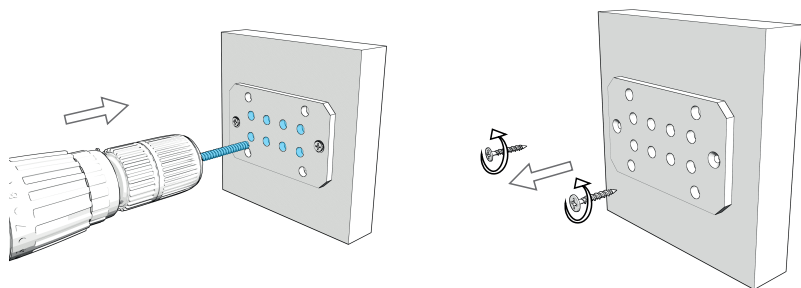


Lambris 20mm

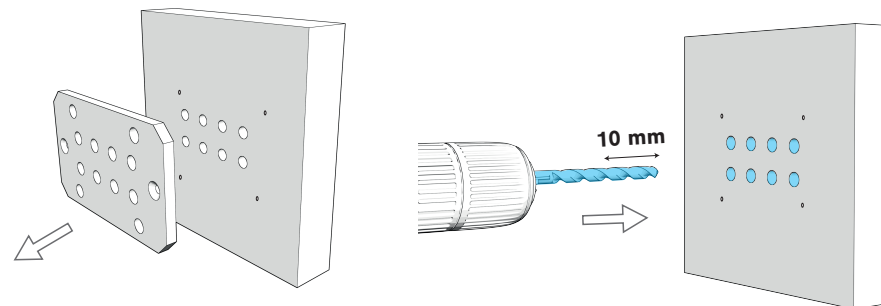
Placez le gabarit en vous assurant qu'il soit de niveau puis vissez-le au panneau. Prépercez ensuite les trous pour les vis du mécanisme DoT avec une mèche de 2,5 mm.



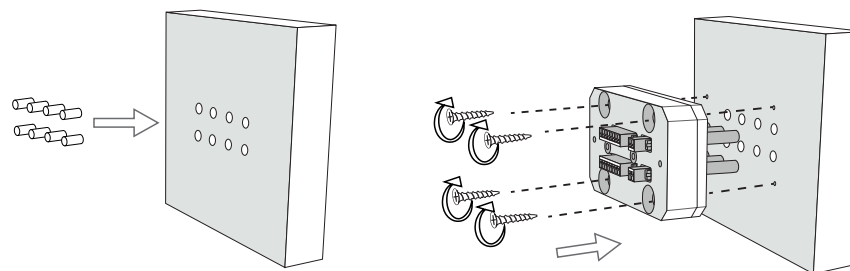
Faites les trous pour les boutons en vous aidant du gabarit. Veillez à utiliser une mèche de 5,5 mm



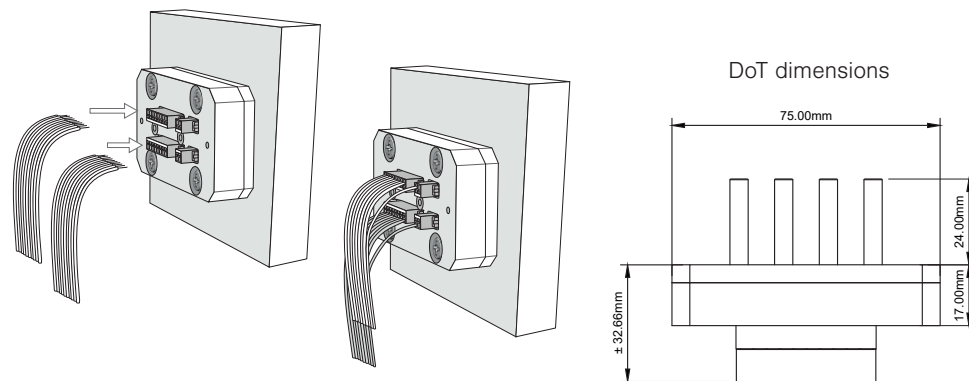
Retirez le gabarit puis élargissez les trous avec une mèche de 6,5 mm sur une **profondeur de 10 mm**. Cette opération est essentielle pour offrir un dégagement nécessaire au bon coulissement du bouton.



Insérez les tubes dans dans les entrées des boutons puis fixez le mécanisme au dos du lambris avec des vis à bois.



Branchez les câbles au mécanisme DoT.



ATELIER LUXUS

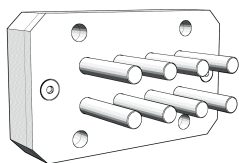
Rue de Benister 8 4920 Harzé-BELGIUM
Tel. +32 (0) 4 344 44 51 / info@atelierluxus.com / www.atelierluxus.com



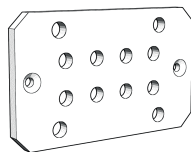
DoT

BY ERPICUM

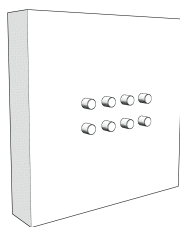
Assembly instructions



Mechanism

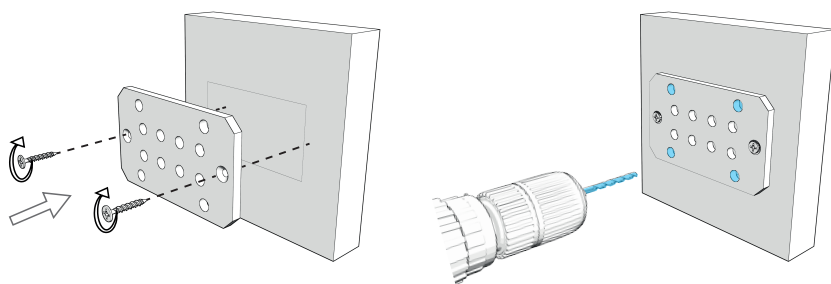


Template

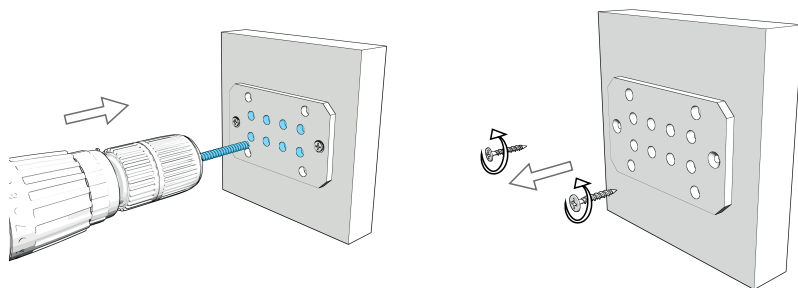


Paneling 20 mm

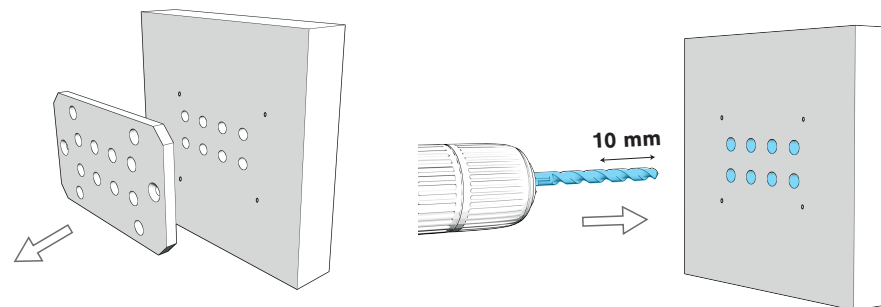
Place the template while making sure it is level then screw it to the panel.
Then drill the holes for the DoT mechanism with a 2.5 mm drill bit.



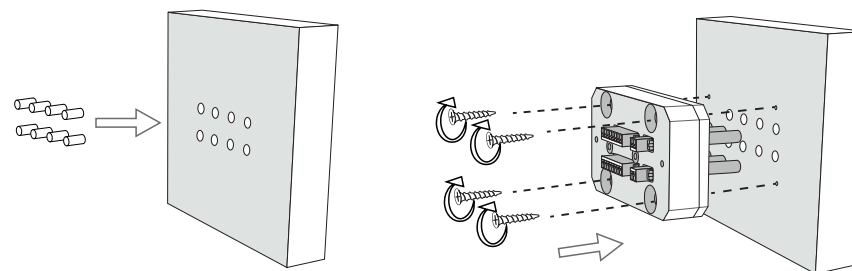
Make the holes for the buttons using the template. Use a 5.5 mm drill bit



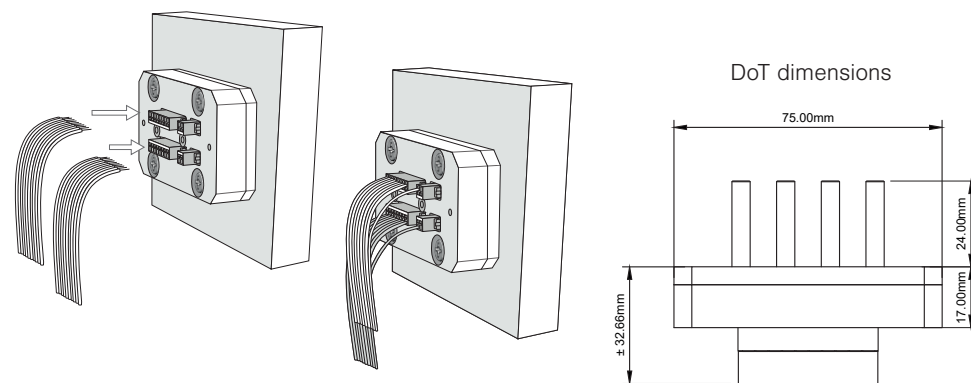
Remove the template then enlarge the holes with a 6.5 mm drill bit to a **depth of 10 mm**.
This is essential to provide the necessary clearance for the knob to slide out properly.



insert the tubes into the button holes then fix the mechanism with wood screws on the back of the paneling.



Plug the cables to the DoT mechanism.



ATELIER LUXUS

Rue de Benister 8 4920 Harzé-BELGIUM
Tel. +32 (0) 4 344 44 51 / info@atelierluxus.com / www.atelierluxus.com

